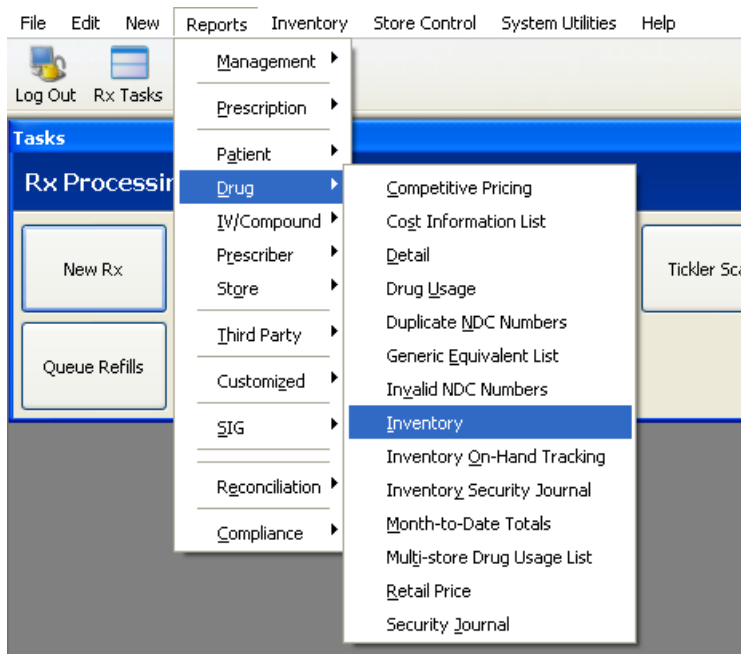
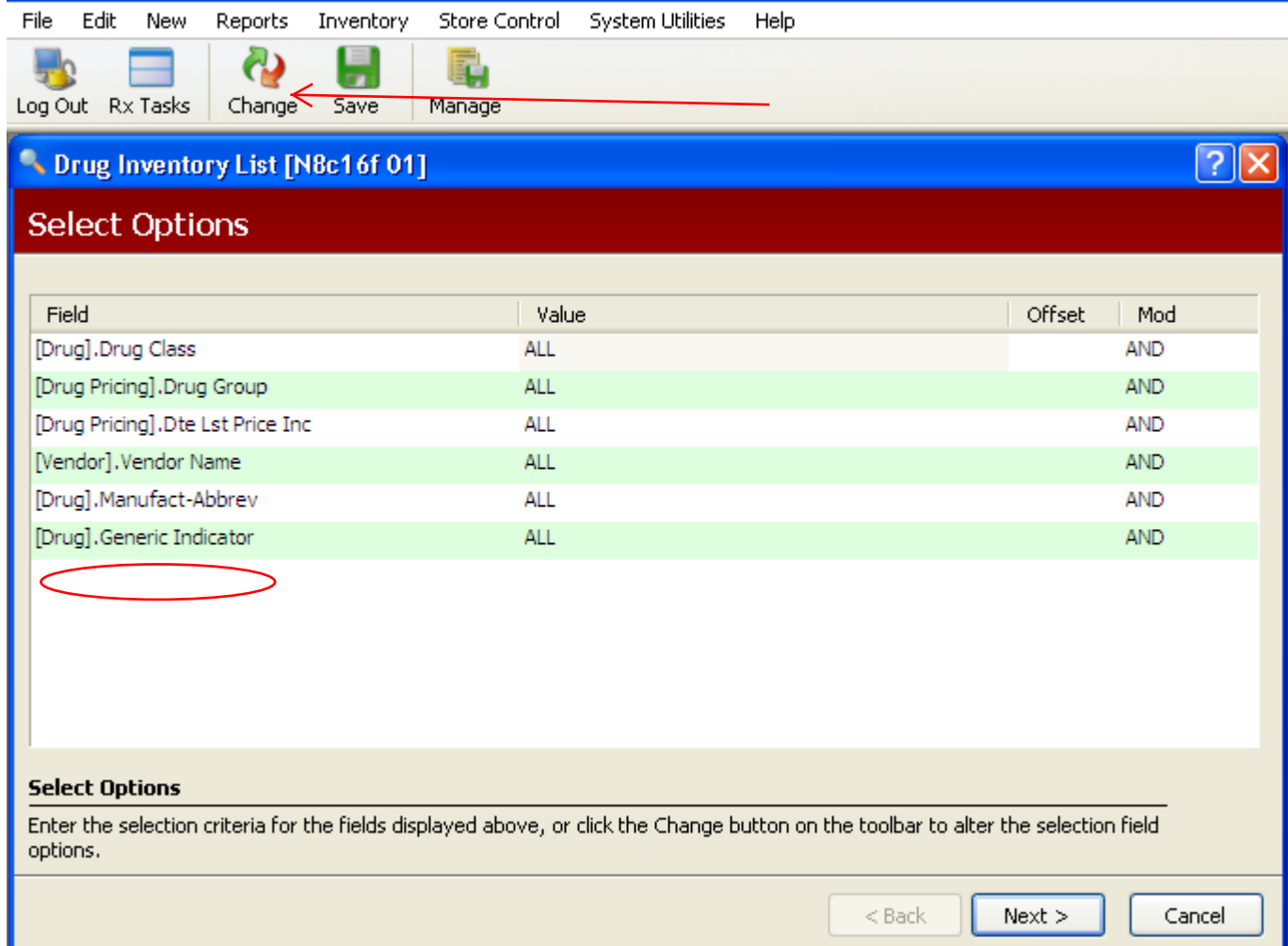


Inventory Report

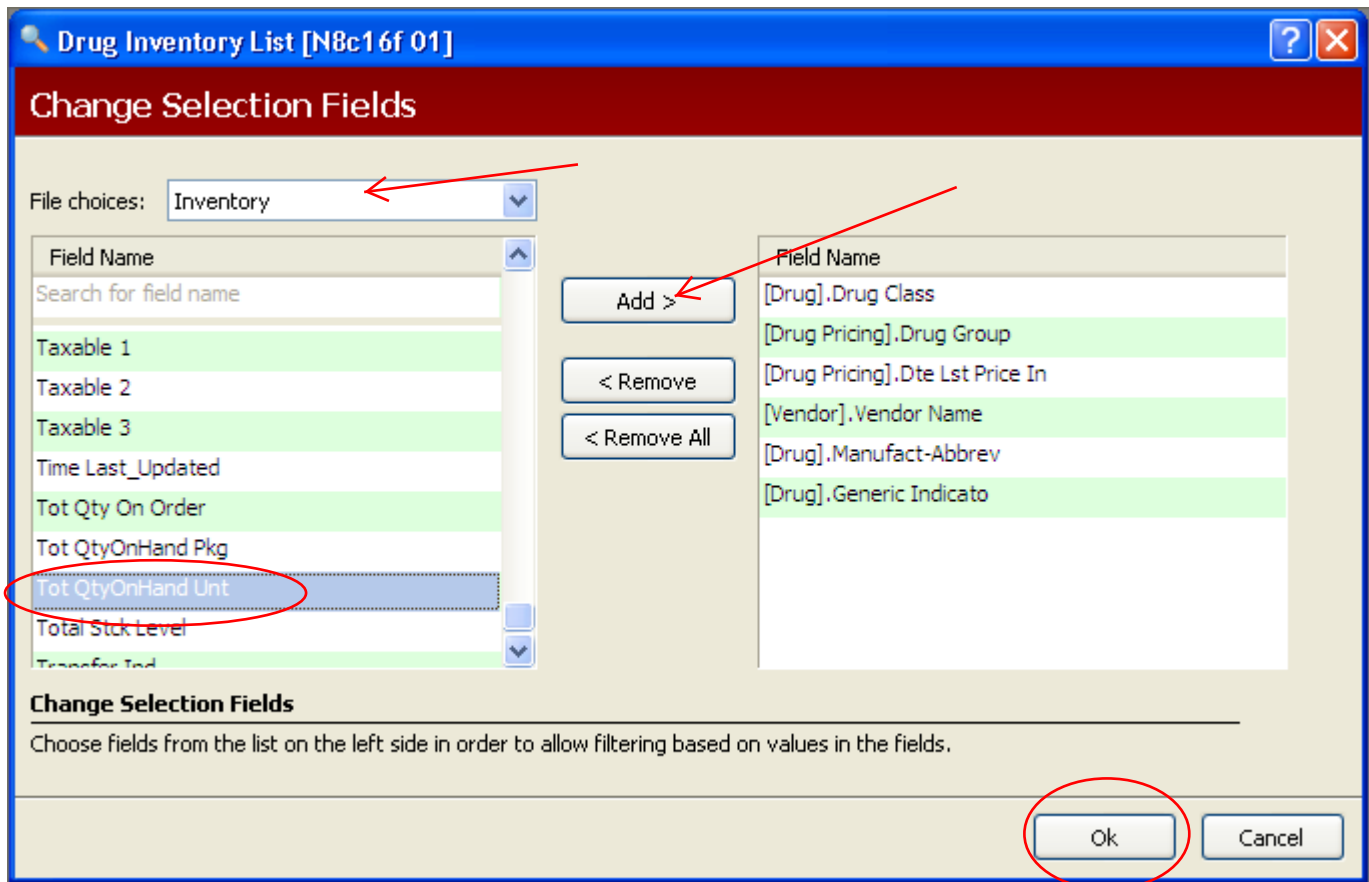
Reports / Management / Inventory



Click on the "CHANGE" icon to add an additional field of Tot QtyOnHand Unt (if it is not already added).



Change the File Choices to 'Inventory' then search the Field Names to find the Tot QtyOnHand Unt field. Click 'ADD>' and then click 'OK'. It will bring you back to the Select Options screen.



Make sure the Value for the new field is "YES" and click the SAVE icon, then click 'Next'.

File Edit New Reports Inventory Store Control System Utilities Help

Log Out Rx Tasks Change Save Manage

Drug Inventory List [N8c16f 01]

Select Options

Field	Value	Offset	Mod
[Drug].Drug Class	ALL		AND
[Drug Pricing].Drug Group	ALL		AND
[Drug Pricing].Dte Lst Price Inc	ALL		AND
[Vendor].Vendor Name	ALL		AND
[Drug].Manufact-Abbrev	ALL		AND
[Drug].Generic Indicator	ALL		AND
[Inventory].Tot QtyOnHand Unt	YES		AND

Select Options

Enter the selection criteria for the fields displayed above, or click the Change button on the toolbar to alter the selection field options.

< Back Next > Cancel

No changes are necessary on this page (click Next)

Drug Inventory List [N8c16f 01]

Sort Options

Field	Order	Totals	Order	Options
[Drug].Drug Name	1	No	Ascending	

Sort Options

Modify the sorting options displayed above, or click the Change button on the toolbar to alter the sort field options.

< Back **Next >** Cancel

No changes are necessary on this page (click Finish)

Print Option	Value	Error Message
Option 3 Only!	3	
Blk Int Class?	NO	
Print Detail.?	YES	
Use MISC1 Cst?	NO	
Use Neg \$ Amt?	NO	

Print Option Values

Enter values for the print options above, or accept the defaults and continue.

< Back Finish Cancel

Print Options explained:

Option 3 Only - Leave this at the default value, 3.

Blk Int Class - Type YES to print drugs with blank interaction code fields.

Print Detail - Type YES to print item detail. Type NO to print only a one-line total of the dollar value based on ACQ cost.

Use Misc1 Cost - Type YES to figure the total dollar amount based on the MSC1 field of the Drug Record.

Use Neg \$ Amt - Type YES to print the actual negative dollar value in the Amount column. The value is derived from the negative Qty On-Hand times the ACQ unit cost.

DRUG ID	ST DRUG DESCRIPTION	UNIT NDC	WHLS-NUMBR	MANUF	PKSZ	ACQ	CST	MTD DISP	YTD DISP	INV LEVEL	ON HAND	AMOUNT
ALLO300	ALLOPURINOL 300 MG TAB	TAB 62584-0713-01	AHP	100	.0862	14	14			86		7.41
AMLO5	AMLODIPINE BESYLATE 5	TAB 59762-1530-01	GREEN	90	.0516	60	60			60-		.00
ANAGOZ	ANAGRELIDE HCL 0.5 MG	CAP 00172-5241-60	IVAX	100	.1371	420	420			120-		.00
ANAS1	ANASTROZOLE 1 MG TABLE	TAB 68382-0209-06	ZYDUS	30	.2527	120	120			120		30.32
ATEN25V	ATENOLOL 25 MG TABLET	TAB 00781-1078-01	SANDO	100	.0322	180	180			20		.64
BICAS50C	BICALUTAMIDE 50 MG TAB	TAB 00093-0220-56	TEVAU	30	.2153	60	60			120		25.84
CLONOP	CLONIDINE HCL 0.1 MG T	TAB 00228-2127-10	ACTAV	100	.0313	90	90			210		6.57
DEXA4X01	DEXAMETHASONE 4 MG TAB	TAB 00054-4184-25	ROXAN	100	.0716	179	179			261		18.69
FAMO40Z	FAMOTIDINE 40 MG TABLE	TAB 00172-5729-60	IVAX	100	.0526	90	90			211		11.10
FEMA2	FEMARA 2.5 MG TABLET	TAB 00078-0249-15	NVRTS	30	16.3260	480	480			60-		.00
FOLI1	FOLIC ACID 1 MG TABLET	TAB 00143-1248-01	WESTW	100		60	60			40		.00
FURO20V	FUROSEMIDE 20 MG TABLE	TAB 00781-1818-01	SANDO	100	.0261	100	100			100		2.61
GABA300	GABAPENTIN 300 MG CAPS	CAP 53746-0102-01	AMNEA	100	.0813	360	360			60-		.00
GLEE100	GLEEVEC 100 MG TABLET	TAB 00078-0401-34	NVRTS	90	44.5454	30	30			60		2,672.72
GLEE400	GLEEVEC 400 MG TABLET	TAB 00078-0438-15	NVRTS	30	157.435760	60	60			30		4,723.07
GRAN1C01	GRANISETRON HCL 1 MG T	TAB 00093-7485-20	TEVAU	20	2.3015					20		46.03
HYDR500F	HYDROXYUREA 500 MG CAP	CAP 00555-0882-02	BARR	100	.3574	316	316			274		97.93
MEGA625	MEGACE ES 625 MG/5 ML	ML 49884-0949-69	PAR P	150	3.7947	560	560			40-		.00
MEGE40M	MEGESTROL 40 MG TABLET	TAB 00904-3571-61	MAJOR	100	.2422	126	126			76		18.41
HINO100	HINOCYCLINE 100 MG CAP	CAP 00115-7018-13	GLBLP	60	.1777	40	40			20		3.55
OMEF2001	OMEPRAZOLE DR 20 MG CA	CAP 62175-0118-32	KRENE	30	.1130	30	30			90		10.17
ONDABV	ONDANSETRON HCL 8 MG T	TAB 00781-1681-31	SANDO	30	.2033	92	92			30		6.10
ONDAB01	ONDANSETRON HCL 8 MG T	TAB 52152-0539-30	ACTAV	30	.1643					60		9.86
ONDABV01	ONDANSETRON ODT 8 MG T	TAB 00781-5239-64	SANDO	30	.3063	54	54			126		38.59
PANT40	PANTOPRAZOLE SOD DR 40	TAB 00008-0607-01	WYETH	90	.1256	63	63			27		3.39
PRED10	PREDNISONE 10 MG TABLE	TAB 00143-1473-01	WESTW	100	.0202	60	60			200		4.04
PRED20	PREDNISONE 20 MG TABLE	TAB 00143-1477-01	WESTW	100	.0461	460	460			265		12.22
PRED5	PREDNISONE 5 MG TABLET	TAB 00143-1475-01	WESTW	100	.0155	434	434			846		13.11
PROC10V	PROCHLORPERAZINE 10 MG	TAB 00781-5021-01	SANDO	100	.0479					99		4.74
SULF800H01	SULFAMETHOXAZOLE-TMP D	TAB 00603-5781-21	QUALT	100	.0913	32	32			68		6.21
TAMO20C	TAMOXIFEN 20 MG TABLET	TAB 00093-0782-56	TEVAU	30	.2410	450	450			90		21.69
VENL37	VENLAFAXINE HCL 37.5 M	TAB 68382-0019-01	ZYDUS	100	.1716	60	60			36		6.18
WARF1	WARFARIN SODIUM 1 MG T	TAB 51672-4027-01	TARO	100	.0841	690	690			310		26.07
WARF10	WARFARIN SODIUM 10 MG	TAB 51672-4035-01	TARO	100	.0860	100	100			400		34.40
WARF201	WARFARIN SODIUM 2 MG T	TAB 51672-4028-01	TARO	100	.1107	200	200			200		22.14
WARF4	WARFARIN SODIUM 4 MG T	TAB 51672-4031-01	TARO	100	.0860					300		25.80
WARF5	WARFARIN SODIUM 5 MG T	TAB 51672-4032-01	TARO	100	.0709	790	790			10		.71
XELO500	XELODA 500 MG TABLET	TAB 00004-1101-50	ROCHE	120	21.5827	180	180			180-		.00

*G R A N D T O T A L

38

TOTAL AMOUNT ON HAND=====>

7,910.31

DRUG ID=short code (if entered) for a drug
DRUG DESCRIPTION=name and strength of the drug
UNIT=unit of drug entered for billing
NDC=National Drug Code
WHLS-NUMBR=reorder code from your wholesaler
MANUF=Manufacturer
PKSZ=package size
ACQ CST=acquisition cost per unit
MTD DISP=month-to-date dispensed
YTD DISP=year-to-date dispensed
INV LEVEL=minimum level (if entered) for inventory
ON HAND=quantity on hand
AMOUNT=dollar value of inventory on hand